

Horizon

HCM-1 / HCP-1

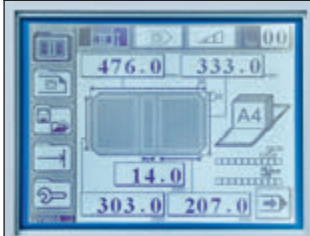
Case Binding System



The Innovative Horizon Case Binding System Delivers Easy, Efficient Short Run Case Binding

HCM-1 : Case-Making Machine

Touch Screen Display



- By inputting the book size, the display will indicate the proper cover sheet and cardboard sizes.
- 20 different job settings can be stored in the memory.

Cardboard Attachment

- The cardboard is attached to the cover sheet with a heated roller by simply pressing a button.

Case-Making

- The edge of the cover sheet is folded automatically by simply inserting the cardboard.



User-Friendly Operation

Hard Cover Case Binding W

5 Easy Steps Case-Making

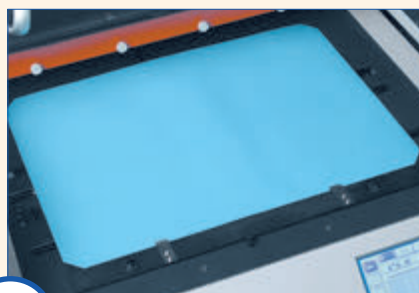


1 Prepare cover material, board material, and book block



Input book size

2 Set front, back, and spine board



3 Set cover sheet on boards



4 Attachment with heated roller

Features

- 1. User-friendly** - Entire case binding process including case-making and joint forming can be done at the push of a button.
- 2. On Demand Binding** - Personalized or single edition case binding can be produced in house, on demand.
- 3. Economical Binding** - The system requires no manual glue application. Consumable waste and supply inventory management problems disappear.
- 4. Original Cover^{*1}** - Each original casebound book is completed with a specially prepared and printed cover.
- 5. Touch-screen Input** - Case preparation set-ups are performed via the touch screen display simply by inputting the book block size.

*1 Lamination is recommended for digital color output.



HCP-1 : Casing-In Machine

Heat-Pressing

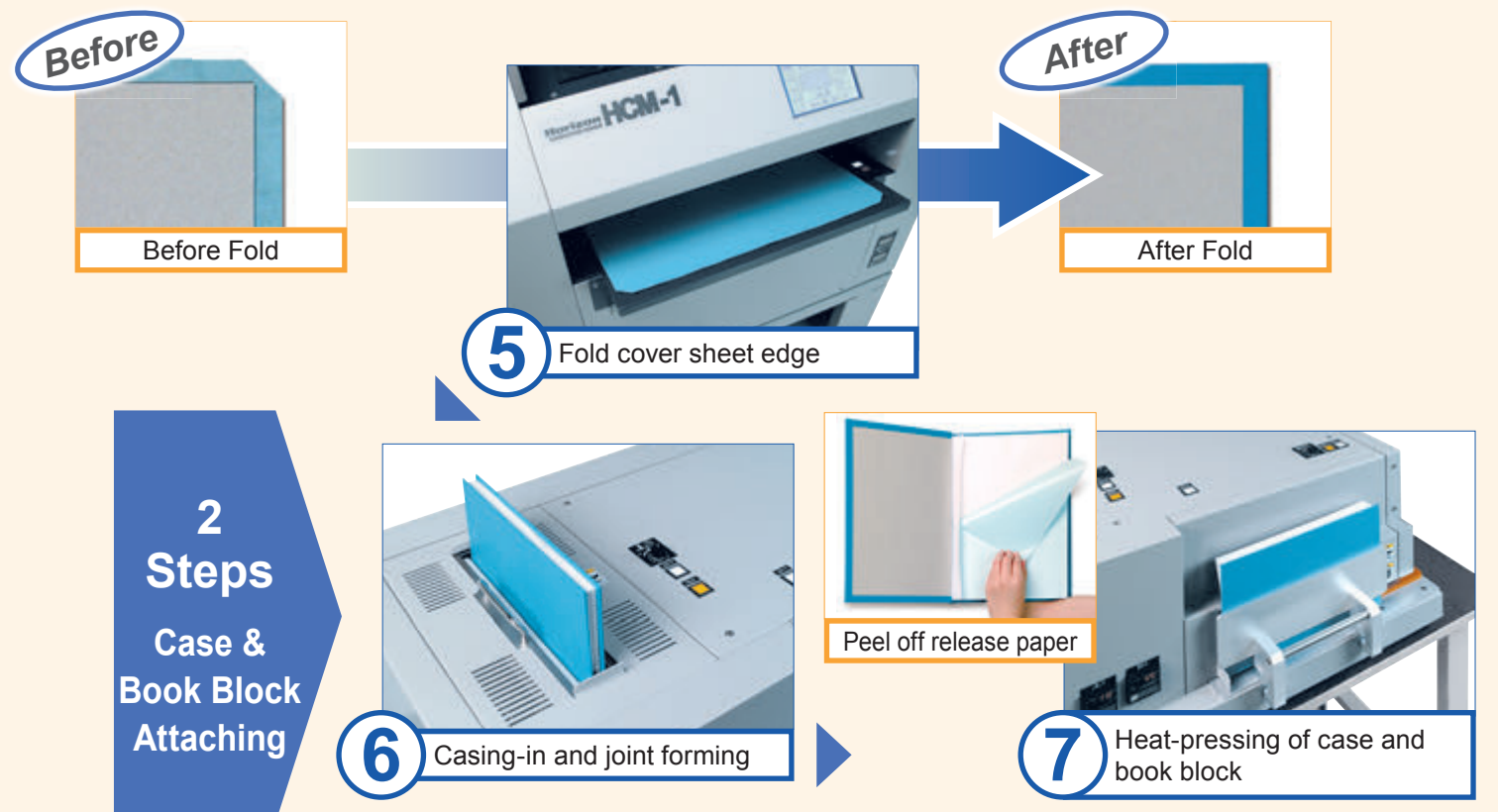
- The case and book block are heat-pressed to form the complete book.
- The heat-pressing time can be adjusted as needed.

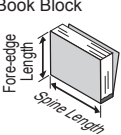
Joint Forming

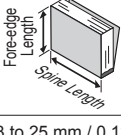
- By simply inserting the case prepared in the HCM-1, the casing-in and joint forming processes are performed automatically.
- The joint forming process does not require any special operator skills.


* HCP-1 Casing-In Machine table is not included in the system.

Was Never Easy... Until Now.



HCM-1 Major Specifications	
Book Block Size	Book Block  Spine Length x Fore-edge Length Max. 297 x 215.9 mm / 11.69" x 8.5" Min. 133.7 x 136.7 mm / 5.27" x 5.39" A4, A5, A5E
	Cover Material Top-Bottom x Fore-edge Max. 333 x 502.8 mm / 13.11" x 19.79" Min. 169.7 x 322.4 mm / 6.69" x 12.70"
	Front and Back Board Top-Bottom x Fore-edge Max. 303 x 212.9 mm / 11.92" x 8.38" Min. 139.7 x 133.7 mm / 5.50" x 5.27"
	Spine Board Top-Bottom x Width Max. 303 x 29 mm / 11.92" x 1.14" Min. 139.7 x 7 mm / 5.50" x 0.28"
Book Block Thickness	3 to 25 mm / 0.12" to 0.98"
Weight Range	Cover Material : 104 gsm to 160 gsm Board Material : Both faces pre-glued (supplied as consumables)
Production Speed	Max. 40 books per hour
Voltage/Frequency	Single Phase 100 V, 50 / 60 Hz Single Phase 230 V, 50 / 60 Hz
Machine Dimensions	W845 x D700 x H1,226 mm / W33.3" x D27.6" x H48.3"

HCP-1 Major Specifications	
Book Block Size	 Spine Length x Fore-edge Length Max. 297 x 215.9 mm / 11.69" x 8.5" Min. 133.7 x 136.7 mm / 5.27" x 5.39" A4, A5, A5E
Book Block Thickness	3 to 25 mm / 0.12" to 0.98"
Production Speed	Max. 50 books per hour
Voltage/Frequency	Single Phase 100 V, 50 / 60 Hz Single Phase 230 V, 50 / 60 Hz
Machine Dimensions	W930 x D600 x H377 mm / W36.7" x D23.7" x H14.9"

HCM-1/HCP-1 Consumables		
		
Board for A4 size	303 x 800 x 2.2 (Thickness) / 11.92" x 31.49" x 0.08"	50 sheets
	0.1 mm pre-glued on both sides	
Board for A5 size	216 x 800 x 2.2 (Thickness) / 8.50" x 31.49" x 0.08"	50 sheets
	0.1 mm pre-glued on both sides	
End Paper	220 x 320 mm / 8.66" x 12.59"	100 sheets
	Normal Paper 128 gsm Single Fold	
	Adhesive coated on one side	
Lining	W70 x L320 mm / 2.75" x 12.59"	100 sheets
	Pre-glued on one side	

*The machine design and specifications are subject to change without any notice.

Distributed by

HORIZON INTERNATIONAL, INC.

510 Kuze Ooyabu-cho, Minami-ku, Kyoto, 601-8206, Japan Phone : +81-(0)75-934-6700, Fax : +81-(0)75-934-6708, www.horizon.co.jp