

# Horizon

BINDING

## BQ-160 Series

For Flexible Binding.



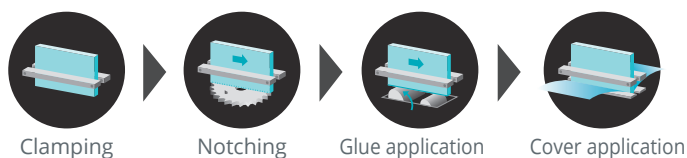
# A PERFECT FINISHING SOLUTION FOR ON DEMAND PRODUCTION.

Simple touch panel operation and an efficient binding procedure achieves production rates up to 180 cycles per hour.



## SIMPLE OPERATION

■ Quick and Easy Production Steps.



1 Insert the book block and press the start button.



2 Place the cover and press the start button again.



3 Glue is applied on the spine of the book.



4 A cover is applied and book binding is completed.

# BQ-160

Professional quality books with a simple process.  
Up to 40 mm or 1.6" thick books can be bound.

Scan QR code  
and watch the  
product video.



## BENEFITS

### APPLICATION FLEXIBILITY

Perfect binding, tape binding, and pad binding can be performed.

### HIGH QUALITY

The various functions equipped with the BQ-160 enable high-quality binding. In addition, an optional CRB-160 impact creaser can be connected in-line to prepare a high-quality creased (up to 8 lines) cover for a wider variety of applications.



BQ-160

# BQ-160PUR

True book-of-one PUR bound book production with simple operation.

## BENEFITS

### APPLICATION FLEXIBILITY

Perfect binding, tape binding, and lining binding for case binding can be performed. BQ-160PUR is suitable to produce personalized photo book production such as wedding albums and travel albums.

### HIGH QUALITY

The various functions equipped with the BQ-160PUR enable high-quality binding. In addition, an optional CRB-160 impact creaser can be connected in-line to prepare a high-quality creased (up to 8 lines) cover for a wider variety of applications.



BQ-160PUR

# DETAILED PROCESS FEATURES.

## BQ-160

### 1 COLOR TOUCH PANEL

A graphical icon-based color touch panel is provided for easy set-up and operator navigation.

#### Ecology Functions

##### ■ Power saving mode (standby mode):

If the system is not used for a predetermined period, the glue tank heater automatically adjusts to a lower temperature.

##### ■ Auto shut-down mode:

If the system is not used for a predetermined period of time, the system automatically shuts down.



BQ-160

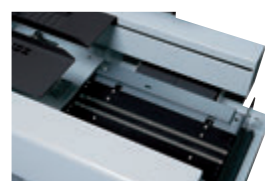
### 2 CLAMPER SECTION

The clamp opens and closes with the simple press of a button for operator convenience.



### 5 NIPPING SECTION

Strong nipper mechanism ensures quality book binds. Nipping pressure, nipping height and angle can be adjusted from the touch panel.



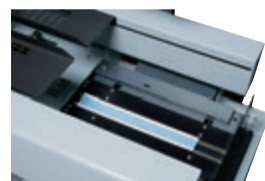
### 3 NOTCHING SECTION

The double-pass notching system produces strong book binds. Notching can be easily set ON or OFF from the touch panel.



### 6 COVER SECTION

Perfect binding, tape binding and pad binding can be performed. Tape width can be adjusted automatically by selecting desired width from the touch panel.



### 4 GLUE TANK SECTION

Uniquely designed glue tank ensures superior glue application to the book spine for quality binding.



#### OPTIONS FOR THE BQ-160

### SF-16 FUME EXTRACTOR

- The strong blower provides constant fume extractions for a comfortable operating environment.



Fume Extractor SF-16

# DETAILED PROCESS FEATURES.

## BQ-160PUR

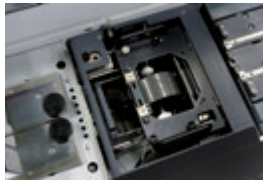
### 1 NOTCHING SECTION

The double-pass notching system produces strong book binds. Notching can be easily set ON or OFF from the touch panel. Notching cutter is specially designed for PUR glue binding so that notching cutter performs very fine pitch roughening.



### 2 GLUE TANK SECTION

Glue amount and cut-off can be controlled from the touch panel. Teflon coated cassette style glue tank is very easy to clean. Glue tank clearing station is prepared for easy cleaning.



### 3 BOOK BLOCK PRODUCTION FOR CASE BINDING

2nd level plate is available for lining bound book block production. End paper can be added here after notching process so that lining bound book can be produced in single pass.



#### REQUIRED OPTIONS FOR PUR BOOK BINDING

#### | PTS-160 PUR TANK SET

- This is a set of spare glue tank and glue application roller.

#### | B-470 TEFLON COATED BEAKER

- This is necessary for pouring the melted PUR glue into the glue tank.

#### | M-470 GLUE MELTING HEATER

- This is necessary to melt the PUR glue.



#### | VS-160 FUME EXTRACTOR

- This absorbs gas emitted from the PUR glue. The ventilation hood is supplied to BQ-160PUR as standard equipment.



# OPTIONS.

## CRB-160

- Impact scoring position is set automatically according to the book thickness inserted into the binder.
- Clean and sharp impact creases can be made even with heavier and laminated stock.
- Stand alone model (CRS-36) is also available with an integrated touch panel operation panel.
- A wide variety of impact scoring patterns can be selected from the touch panel.
- Suitable for crease covers, restaurant menus, greeting cards and all digital print applications.

### OPERATION CONSOLE

The CRB Creasers can be set-up through the color touch panel of the BQ-160 series. Cover creasing and a variety of other creasing patterns can be selected from the touch panel.

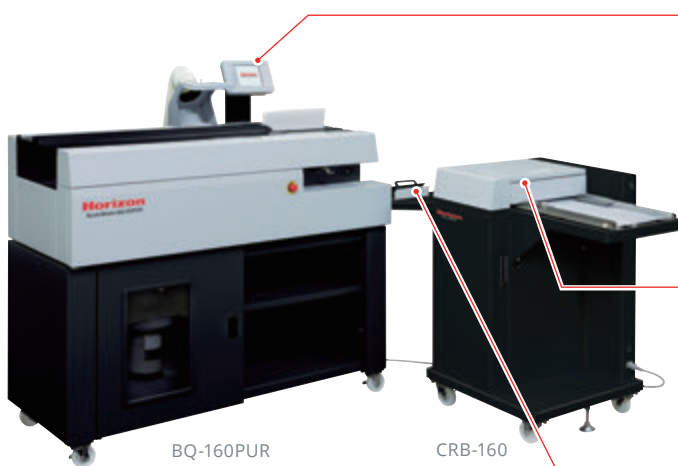


### IMPACT CREASING SECTION

Impact creasing position is automatically set according to the book thickness inserted into the BQ-160 series. Depth of the creasing can also be set depending on cover thickness.

### DELIVERY TRAY

Creased sheets are delivered at a comfortable height for easy handling.



### OPTIONS FOR THE CRB-160

- By replacing the creasing blade of the 1st/2nd creasing unit with the optional creasing blade, the width of the crease can be changed.

FIRST CREASING UNIT	SECOND CREASING UNIT
Narrow Creasing Blade 0.8 mm	Narrow Creasing Blade 0.8 mm
Wide Creasing Blade 1.3 mm	
Wide Creasing Blade 2.0 mm	Wide Creasing Blade 2.0 mm

## PRF-36 IMPACT PERFORATION UNIT

- Perforation can be made instead of crease by replacing the first creasing unit with PRF-36. In addition to the standard equipped perforation blade (cut 2.5 mm, uncut 0.8 mm), an optional perforation blade (cut 3 mm, uncut 1 mm) is also available.

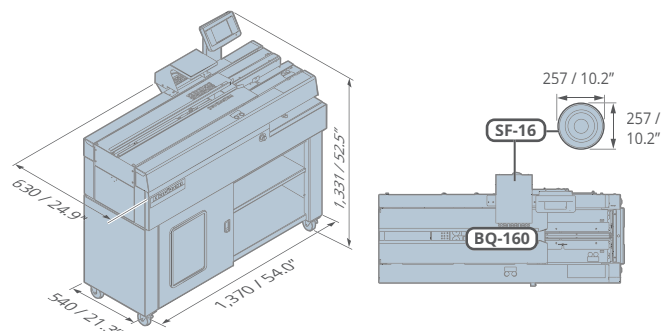


CRB-160	
Installation Type	Floor Model
Sheet Feeding System	Manual Feed
Sheet Size	<div> </div> <b>Width x Length</b> Max. 364 x 650 mm or 14.33" x 25.59" Min. 140 x 180 mm or 5.52" x 7.09"
Sheet Weight Range	Normal Paper, Coated Paper 81.4 to 407 gsm, 24 lb bond to 150 lb cover
Impact Creasing Mechanism	One set of positive and negative Narrow creasing blade 0.5 mm for the first creasing unit Wide creasing blade 1.3 mm for the second creasing unit
Number of Impact Crease Lines	Max. Eight creasing lines
Production Speed	Length 430 mm or 16.92", Four creasing lines, 4 seconds per sheet A4, short-edge feeding, one creasing line, 1.5 seconds per sheet
Voltage / Frequency	Single Phase 115 to 120 V, 50 or 60 Hz Single Phase 200 to 240 V, 50 or 60 Hz
Rated Current	Single Phase 115 to 120 V, 50 or 60 Hz, 1.1 A Single Phase 200 to 240 V, 50 or 60 Hz, 0.5 A
Machine Dimensions	W1,326 x D610 x H980 mm or W52.3" x D24.1" x H38.6" When the delivery tray is folded W752 x D610 x H980 mm or W29.7" x D24.1" x H38.6"
Machine Weight	82 kg or 180.8 lb

# SPECIFICATIONS.

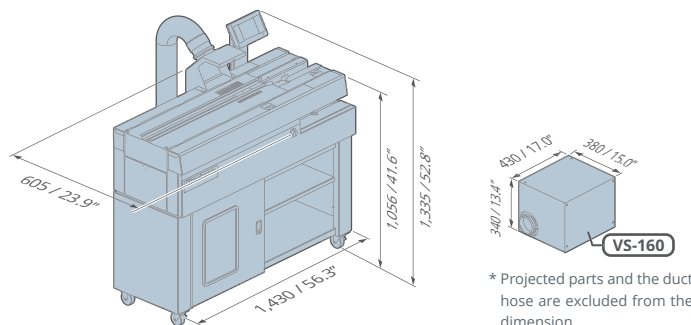
## Machine Dimensions. (Unit: mm / inch)

### BQ-160



Power Cable 3 m / 118.1"

### BQ-160PUR



Power Cable 3 m / 118.1"

	BQ-160	BQ-160PUR
Binding Type	Cover Binding            Tape Binding            Pad Binding	Cover Binding            Tape Binding            Lining Binding
Glue Type	EVA glue	PUR glue
Book Block Size	<b>Spine Length x Fore-edge Length</b> Max. 350 x 300 mm or 13.7" x 11.8" Min. 70 x 128 mm or 2.8" x 5.1" A4 / B5 / A5 / B6	
Book Block Thickness	1 to 40 mm or 0.04" to 1.6"	
Cover Size	<b>Length x Width</b> Max. 350 x 640 mm or 13.7" x 25.1" Min. 70 x 256 mm or 2.8" x 10.1"	
Cover Weight Range	82 to 302 gsm or 22 to 80 lb	
Glue Temperature	120 to 200 °C or 248 to 392 °F - 180 °C or 356 °F for HM-110 glue - 140 °C or 284 °F for optional HM-302 low temperature glue	100 to 140 degrees Celsius or 212 to 284 degrees Fahrenheit
Cycle Speed (*1)	Cover Binding Max. 180 cycles per hour Tape Binding Max. 180 cycles per hour Pad binding Max. 120 cycles per hour	Cover Binding Max. 180 cycles per hour Tape Binding Max. 120 cycles per hour Lining Binding Max. 100 cycles per hour
Other Functions	Automatic shutdown function How-to-use navigation function Adjustable binding condition settings Roughing function Book block automatic clamp function	
Voltage/Frequency	Single Phase 115 to 120 V, 50 or 60 Hz Single Phase 220 to 240 V, 50 or 60 Hz	
Rated Current	Single Phase 115 to 120 V, 50 or 60 Hz, 7.7 A Single Phase 220 to 240 V, 50 or 60 Hz, 3.5 A	Single Phase 115 to 120 V, 50 or 60 Hz, 5.6 A Single Phase 220 to 240 V, 50 or 60 Hz, 2.5 A
Machine Dimensions	W1,370 x D540 x H1,331 mm or W54.0" x D21.3" x H52.5"	W1,430 x D605 [without the Exhaust Duct Kit] x H1,335 mm or 56.3" x 23.9" x 52.8"
Machine Weight	204 kg or 449.8 lb	230 kg or 507.1 lb

## CONSUMABLES.

BQ-160 SERIES CONSUMABLES					
Name	Model	Quantity	Variety	BQ-160	BQ-160PUR
Glue	HM-110	1 box (5 kg or 11 lb)	-	Yes	-
Glue (PUR)	HMR-115	1 box (5 kg or 11 lb)	-	-	Yes
Cover Sheets for Laser Printer	-	A4 5 sheets each	White, Ivory	Yes	Yes
Tapes	A4-30 mm	A4 30 mm or 1.18" (100 sheets)	Black	Yes	Yes
Tapes	A4-40 mm	A4 40 mm or 1.57" (100 sheets)	Black, Yellow, Blue, Navy, Red, White	Yes	Yes
Tapes	A4-50 mm	A4 50 mm or 1.97" (100 sheets)	Black	Yes	Yes
Printable Spine Tape	-	A4 40 mm or 1.57" (100 sheets)	-	Yes	Yes

\* 1 Operator's working time is not included.

\* The machine design and specifications are subject to change without any notice.

\* Specifications may vary depending on the job, paper quality, environmental influences, and various other factors. Please do a test run before starting production.

**MORE AT**  
**HORIZON.CO.JP**



**Horizon**

Horizon International Inc.

1601 Asahi, Shinasahicho, Takashima,  
Shiga, 520-1501, Japan  
Phone : +81-740-25-4570  
Fax : +81-740-25-5820  
[www.horizon.co.jp](http://www.horizon.co.jp)

Horizon GmbH

Pascalstrasse 20  
25451 Quickborn / Germany  
Phone : +49 4106 8042-0  
Fax : +49 4106 8042-199  
[www.horizon.de](http://www.horizon.de)